



RINCON
by Kirsten Joel

DESIGN INFORMATION

Rincon is a mid-thigh length caftan worked in a delicate lace stitch, featuring a horizontal garter stitch hem. The fronts and back are worked in pieces from the bottom up, back & forth in rows, and seamed after all pieces have been knit. Stitches are picked up around the armhole to work attached sleeve cuffs.

The sample is knit in Purl Soho Cattail Silk, a 100% fingering weight silk, in Patina Blue. This is a great layering piece for hot summer days, cool summer nights, and protection against the office a/c. The delicate lace pattern is balanced with sturdy garter stitch to add a modern touch to an otherwise timeless knit. Please share your progress on instagram with #rinconcaftan.

SKILL LEVEL



FINISHED MEASUREMENTS

Sizes 1 (2, 3, 4, 5) (6, 7, 8, 9) with finished chest measurements 48 (52, 56, 60, 64) (68, 72, 76, 80)" to fit 30 (34, 38, 42, 46) (50, 54, 58, 62)" chest; designed with 16-18" positive ease.

Sample shown on 34" chest with 18" positive ease. Sample length modeled on 5'3" height.

YARN

Purl Soho Cattail Silk - Fingering weight; 100% Silk; 618 yards (585 meters) / 100 g (3.5 oz)

3 (3, 3, 3, 4) (4, 4, 5, 5) skeins, photographed in Patina Blue or ~ 1224 (1333, 1432, 1546, 1732) (1991, 2138, 2291, 2446) yards of a fingering weight yarn.

GAUGE

19 sts and 30 rows = 4" over Lace Stitch, blocked.

20 sts and 34 rows = 4" over Garter stitch, blocked.

kirstenjoel.com

All text, images, & illustrations ©2024 Kirsten Joel
For personal use only

NEEDLES

US 3 / 3.25 mm 32" circular needles, or size to obtain gauge.

US 3 / 3.25 mm double-pointed needles, for sleeve cuffs

Note: A circular needle is used to accommodate the number of stitches. Fronts, Back and Sleeves are worked in pieces.

TOOLS

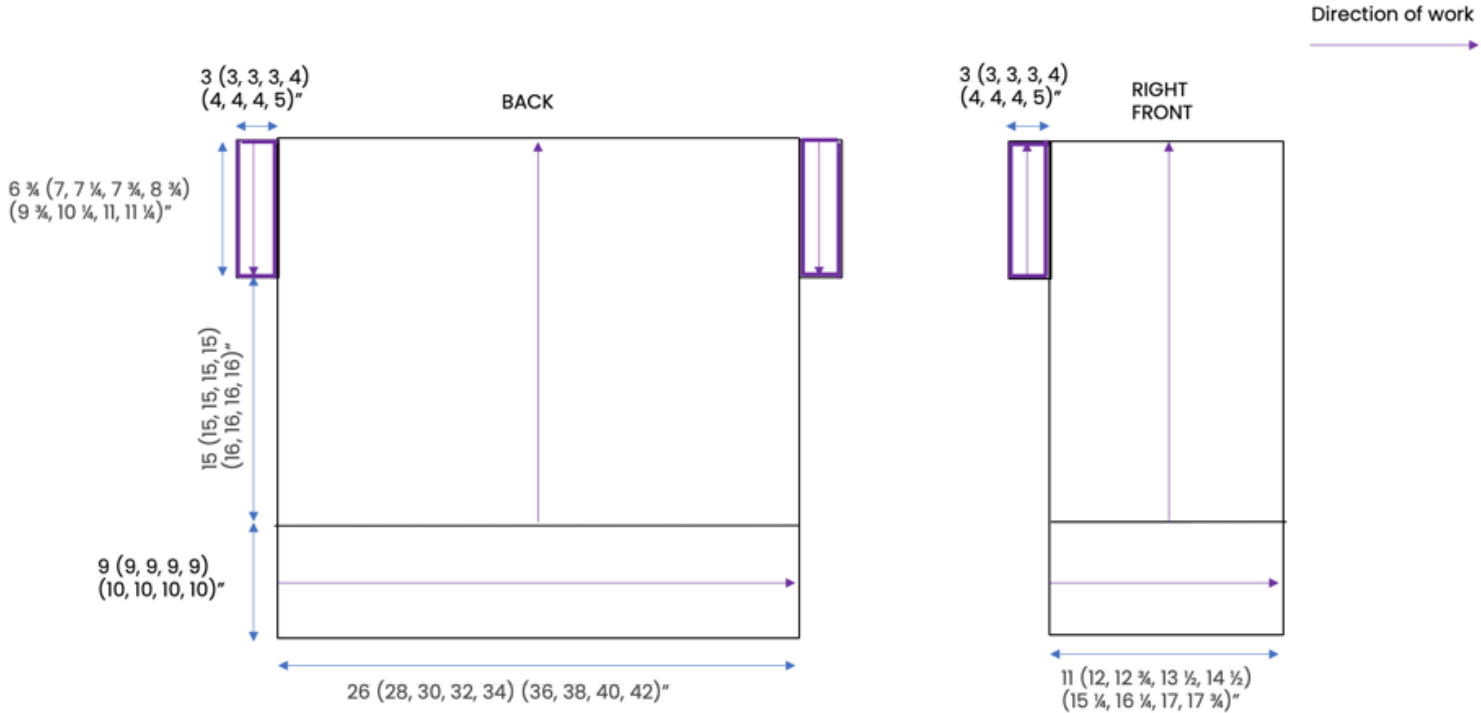
Waste yarn, locking stitch markers (4), tapestry needle, blocking wires, blocking pins.



kirstenjoel.com

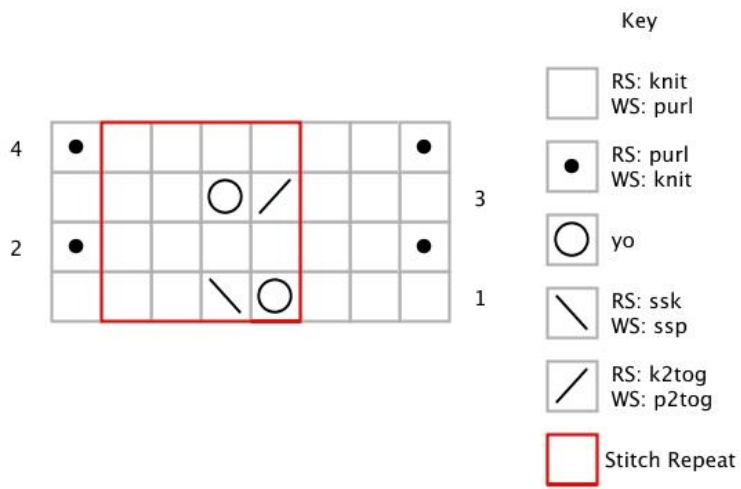
All text, images, & illustrations ©2024 Kirsten Joel
For personal use only

SCHEMATIC



LACE STITCH PATTERN

CHART INSTRUCTIONS



WRITTEN INSTRUCTIONS

LACE STITCH (multiple of 4 sts)

Row 1 (RS): K3, *yo, ssk, k2; rep from * to last st, k1

Row 2 (WS): K1, purl to last st, k1

Row 3: K3, *k2tog, yo, k2; rep from * to last st, k1

Row 4: Rep Row 2

Rep Rows 1 - 4 for pattern



ABOUT THE DESIGNER

Originally from Los Angeles, Kirsten moved to Charleston, SC with her husband Jason and quickly planted roots with a group of girlfriends and started her family. She strongly believes in designing knit patterns that are portable, meditative, and quietly sophisticated. Her designs allow you to be present for all of life's little moments and create finished pieces that will quickly become wardrobe staples. She loves working with wool, silk, cotton, and linen in classic, neutral colors.

CREDITS

Tech Editing: Chaitanya Muralidhara

CONTACT

A lot of hard work goes into ensuring these patterns are simple to understand and error free. If you get stuck, need extra guidance, or think there may be an error please email hello@kirstenjoel.com and I will connect with you as soon as I can.

SUBSCRIBE

Enjoyed this pattern? [Subscribe to my newsletter](#) to be the first to know when new designs are launched. I'll also send helpful tips & techniques so that you can connect with your craft and make the most of your knitting practice.

YOU MIGHT ALSO LIKE...



SISTER PEPLUM
tops



MARIEL
pullovers



MYRTLE
cardigans

kirstenjoel.com

All text, images, & illustrations ©2024 Kirsten Joel
For personal use only